

EXCEPTIONAL MANAGER PROGRAM



What is EMP?

The Exceptional Manager Program (EMP) is the most comprehensive manager training course available. It empowers your management team with the mindset, skills, and tools necessary to produce high-functioning teams.

A strong management team is often a key missing element in small and midsize businesses. This results in stagnated growth, financial underperformance, and company leadership spending too much energy on the operations of the business.

The Exceptional Manager Program's purpose is to shape a Management Team into the backbone of an Exceptional Company.

What makes an Exceptional Manager?

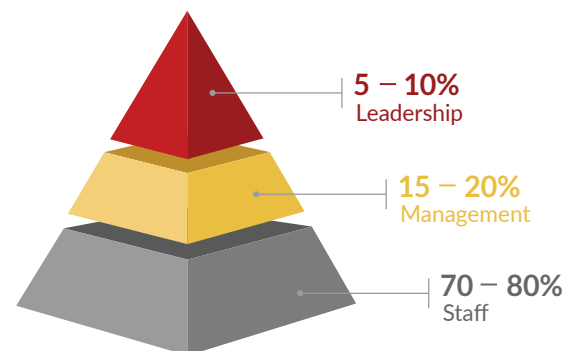
An Exceptional Manager is someone who has the mindset and skills to deliver high levels of value to their organization by effectively managing the Self, Staff, Work, and Workplace.

CREATING HIGHLY ENGAGED EMPLOYEES

With the widespread challenge of finding good employees, it's more important than ever to get the most out of your employees.

Unfortunately, studies show that **70% of the nation's working population admits to being disengaged** in their jobs. A disengaged workforce does not create a high-functioning, highly profitable organization. Fortunately, the same study found that increasing manager effectiveness can improve employee engagement by 75%.

The reality is that in most organizations, managers are responsible for the productivity, well-being, and development of 80% of a company's employees.



Yet, most individuals in managerial positions have not received formal training in the skills needed to be an effective manager. It is very common for people in these roles to have grown into them, through excelling in their skill or trade. But the skills needed to be an effective manager are entirely different than the skills needed to be great in an operational position.

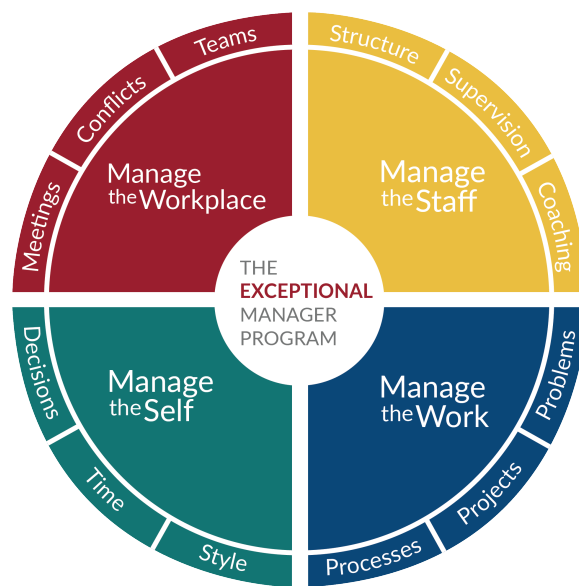
Empower this critical layer of your organization with the mindset, skills, and tools necessary to produce high-functioning teams.

PROGRAM STRUCTURE

This year-long program instills the mindset and skills that make an Exceptional Manager. At the heart of The Exceptional Manager Program is this diagram – the Management Wheel.

Each quadrant represents a key area that must be successfully managed – Self, Staff, Work, Workplace. During the 12-month course, we spend three months on each of the four quadrants.

The 12-month program is comprised of **five** components. Multimodal learning engages participants from various aspects, achieving higher levels of understanding and retention.



LOCATIONS

The Exceptional Manager Program is available in select cities nationwide in both private and public formats.

Visit
www.rewildgroup.com/emp
to learn more.

The
ReWild
Group

- 1 Knowledge Transfer Videos** - Core principles are communicated via video prior to each in-class meeting and can be viewed at the participants' convenience.
- 2 Interactive Classes** - Participants come prepared for the monthly half-day, hands-on sessions. Most of the in-class time is spent on activities that apply the concepts communicated in the videos.
- 3 On-the-Job Application** - Between classes, participants apply the principles, methods, and tools in their organization, allowing them to experience the benefits in a real-life environment.
- 4 Management Tools** - Practical software tools create tangible structure for the participants, improving their ability to manage their departments.
- 5 Progress Assessments** - Periodic assessments are taken during the program to measure participant progress.

GROWING EXCEPTIONAL COMPANIES